



Coupling Drawing

Чертеж муфты

Pump size / type : 16x21 BFD - 2 stg.
Flowserve serial no. : 100039 - 100042

Customer : CPC-K
Ultimate user : CPC-K
Customer order no. : 10-0319
Location : APS-4, Kazakhstan
Item no. : P0031-PU-C001A/B/C/D

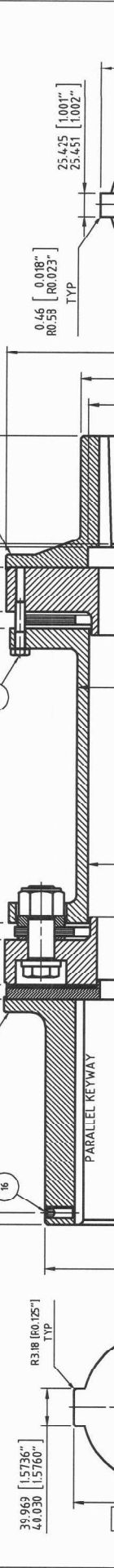
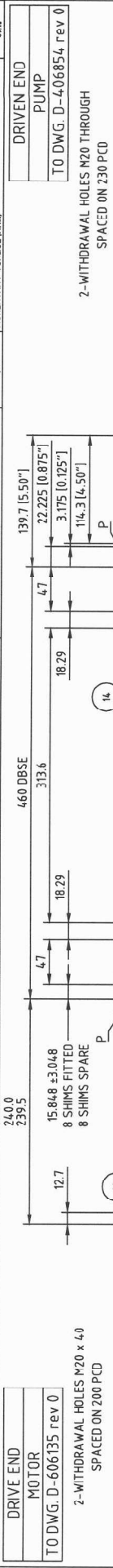
Типоразмер насоса : 16x21 BFD - 2 stg.
Заводской номер : 100039 - 100042
Заказчик : CPC-K
Конечный пользователь : CPC-K
Номер заказа заказчика : 10-0319
Местонахождение : APS-4, Kazakhstan
Поз. : P0031-PU-C001A/B/C/D

- APPROVED: NO ACTION REQUIRED.
 APPROVED: SUBMIT FINAL DOCUMENT.
 APPROVED EXCEPT AS NOTED:
 MAKE CHANGES AND SUBMIT FINAL DOCUMENT.
 SUPPLIER MAY PROCEED AS APPROVED.
 NOT APPROVED: CORRECT AND RE-SUBMIT FOR APPROVAL.

APPROVAL DOES NOT INFLUENCE THE LIABILITY OF THE SUPPLIER

ORIGINAL	SUPPLIER	AST	RID	2011-Sep-14	First Issue
REVISION	PREPARED	CHECKED	APPROVED	APPR. DATE	COMMENTS

DUTY REQUIREMENTS		COUPLING MASS ELASTIC TOTALS		COUPLING CAPACITIES	
RATED POWER (KW)	6000	MASS (KG)	186.3	IS LATERAL CRITICAL (RPM)	3300
RATED SPEED (RPM)	2965	INERTIA (kg m ²)	2.3	PEAK TORQUE (kNm)	54.004
RATED TORQUE (kNm)	19.3	TORESIONAL STIFFNESS (Nm/rad)	5.1	NO. OF CYCLES (FOR PEAK TORQUE)	5775
MAX. TORQUE (kNm)	-	Including 1/3rd shaft penetration	-	NO. OF CYCLES (FOR PEAK TORQUE)	5775
				TRANSIENT TORQUE (kNm)	6.900
				NO. OF CYCLES	8.00
				TRANSIENT TORQUE (kNm)	6.900



Item	Description	Qty	ID Number	Material
16	GRUBSCREW M12x30	1	M12:05GW	Gr:12.9
15	HELICOID SCREWLOCK INSERT M16x32 LONG	32	M16H120D	ALSI304
14	SET SCREW M10 x 50 HEX HD	8	M10:05HB	Gr: 8.8
13	CAP SCREW M16 x 50 SHCS	16	M16:050C	Gr: 12.9
12	CAP SCREW M16 x 60 SHCS	16	M16:050C	Gr: 12.9
11	SHIMS	16	TF3300SH	ALSI 301
10	PACKING RING TF3300	1	10088-6/MP1	ASTM A350 LF2
9	ELEMENT BLADE	54	15254-10	ALSI 301
8	ELEMENT WASHER	16	10084-4	BS3 23
7	OVERLOAD WASHER	16	TF3300GZOW	BS3 23
6	LOCKNUT M27	16	M27SL10	Gr: 10
5	COUPLING BOLT TF3300	16	TF3:00CB/MP1	Gr: 10.9
4	ANTI-FLAIL ADAPTOR TF3300	2	10088-4/MP1	ASTM A350 LF2
3	SPACER TF3300	1	10088-3/MP1	ASTM A350 LF2
2	HUB Ø4.5" B+K TAPER TF3300	1	10089-1/MP1	BS 970 817M40T
1	HUB Ø60mm B+K (SINGLE) TF3300	1	10089-1/MP1	BS 970 817M40T

DRIVE END
PUMP
TO DWG. D-406854 rev 0

MOTOR END
TO DWG. D-606135 rev 0

2-WITHDRAWAL HOLES M20 x 4.0
SPACED ON 200 PCD

2-WITHDRAWAL HOLES M20 THROUGH
SPACED ON 230 PCD

1 HOLE M10 x 20 DEEP FOR LIFTING EYE BOLTS IN EACH SPACER FLANGE

1/2 MASS 108.8 kg

1/2 MASS 68.1 kg

DO NOT SCALE IF IN DOUBT ASK

THIRD ANGLE PROJECTION

UNLESS OTHERWISE STATED, ALL DIMENSIONS IN MILLIMETERS, BS, ISO & DIN STANDARDS ARE AT LATEST ISSUE

KEY: # ALL REMOVABLE PARTS TO BE PAINTED YELLOW AND MUST BE REMOVED PRIOR TO OPERATION
* PARTS TO BE BALANCE WEIGH TO WITHIN 0.1g.

QTY	SIZE	PCD	POSITION
16	M10	28P	P
	M10	28P	O
	M10	28P	R
	M10	28P	S

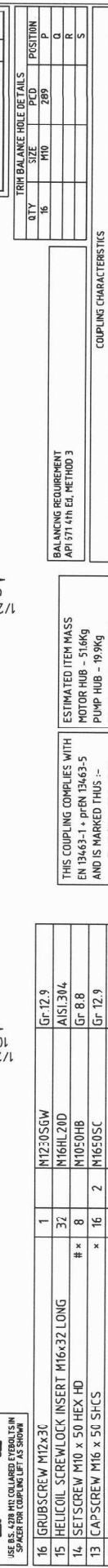
TRIP BALANCE HOLE DETAILS

ESTIMATED ITEM MASS
MOTOR HUB - 51.6kg
PUMP HUB - 19.9kg
TRANS. UNIT - 102.8kg

RECOMMENDED TIGHTENING TORQUES
BOLT No. NUT No. TORQUE (Nm) STRETCH (µm)
13 152 152
12 152 152
5 6 750 90

DO NOT TAMPER WITH THE FOLLOWING FASTENERS. THEY ARE TIGHTENED BY BIBBY TURBOFLEX AS A FACTORY ASSEMBLED JOINT

NOTES:
1) THIS COUPLING IS SUPPLIED MATCH-MARKED IN ACCORDANCE WITH U.S. S-248
2) COUPLING SUPPLIED FITTED WITH SERIAL NUMBER IN ACCORDANCE WITH U.S. S-250



ALLOWABLE MISALIGNMENTS

AXIAL THRUST CURVES

COUPLING CHARACTERISTICS

AXIAL DEFLECTION (mm)

AXIAL DEFLECTION (mm)

COUPLING CHARACTERISTICS PRODUCED
RATED DUTY SPEED
--- 0 RPM

AXIAL NATURAL FREQUENCY API 617H 4th EDITION PARA 8.12.1 STATES "MULTI-TUBE, MULTIDIRIAGM AND NONCONVULSED SINGLE ELEMENT FLEXIBLE COUPLINGS DO NOT EXHIBIT UNDAMPED VIBRATION RESPONSE."

Customer Order No.	Flowserve	General Arrangement
2853	2853	TF3300.460 (2AH) SPACER COUPLING ARRANGEMENT DRAWING
8707	8707	
17	17	
FR 14334-2	FR 14334-2	

DRG No: 10089SHT1 REV: A

Bibby Transmissions
CANNON WAY, MILL ST WEST, BENS BURY, MK13 8EH
TEL: 01924 66001 FAX: 01924 457468

DO NOT SCALE IF IN DOUBT ASK

THIRD ANGLE PROJECTION

UNLESS OTHERWISE STATED, ALL DIMENSIONS IN MILLIMETERS, BS, ISO & DIN STANDARDS ARE AT LATEST ISSUE

ORIGINAL ISSUE DATE 27/01/11

ECIA SIG. DATE

DESCRIPTION

Copyright © Bibby Transmissions, Not to be Copied or Communicated to a Third Party without Permission.

